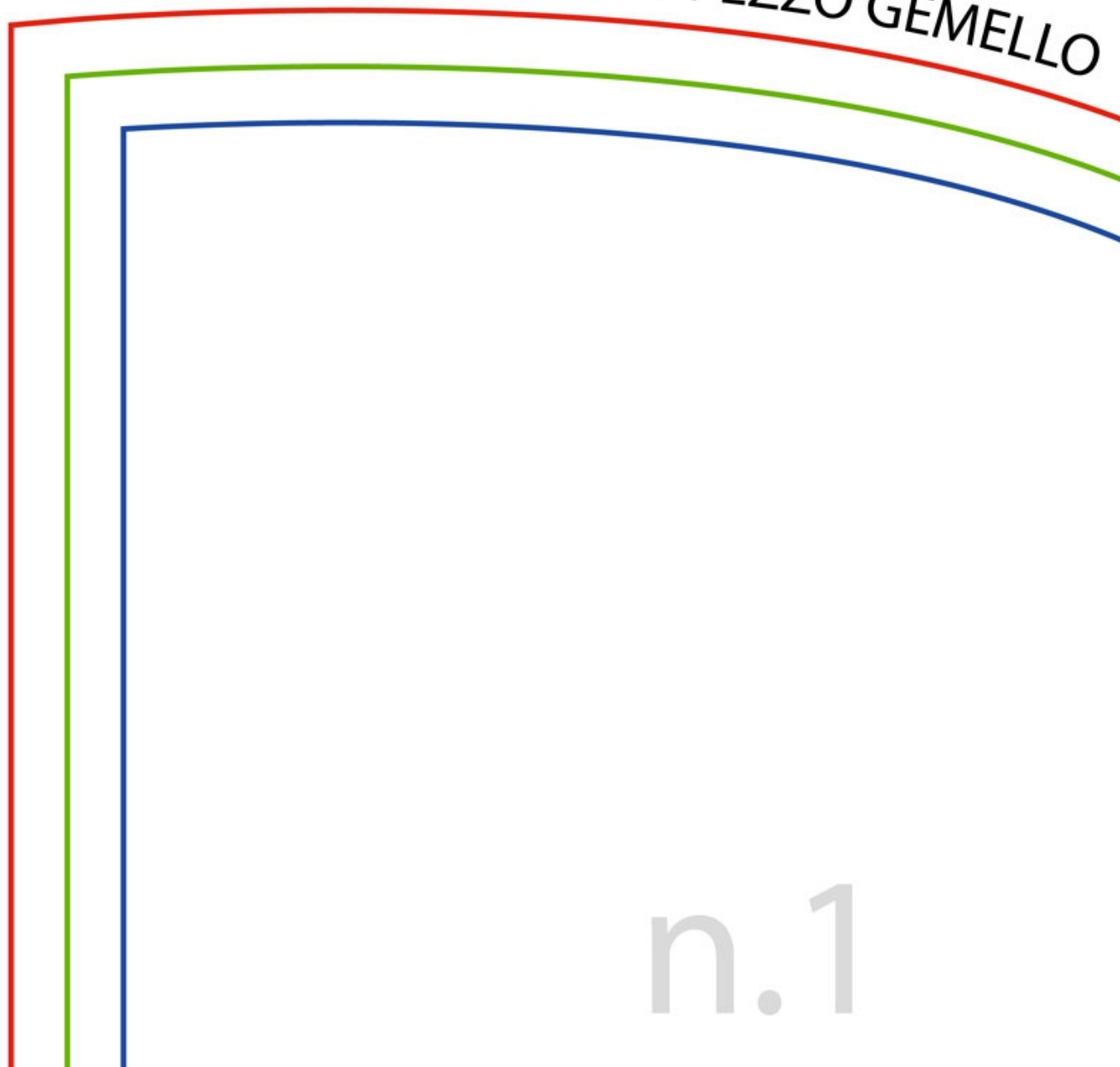




cappuccio 2x

LATO CUCITURA DEL PEZZO GEMELLO

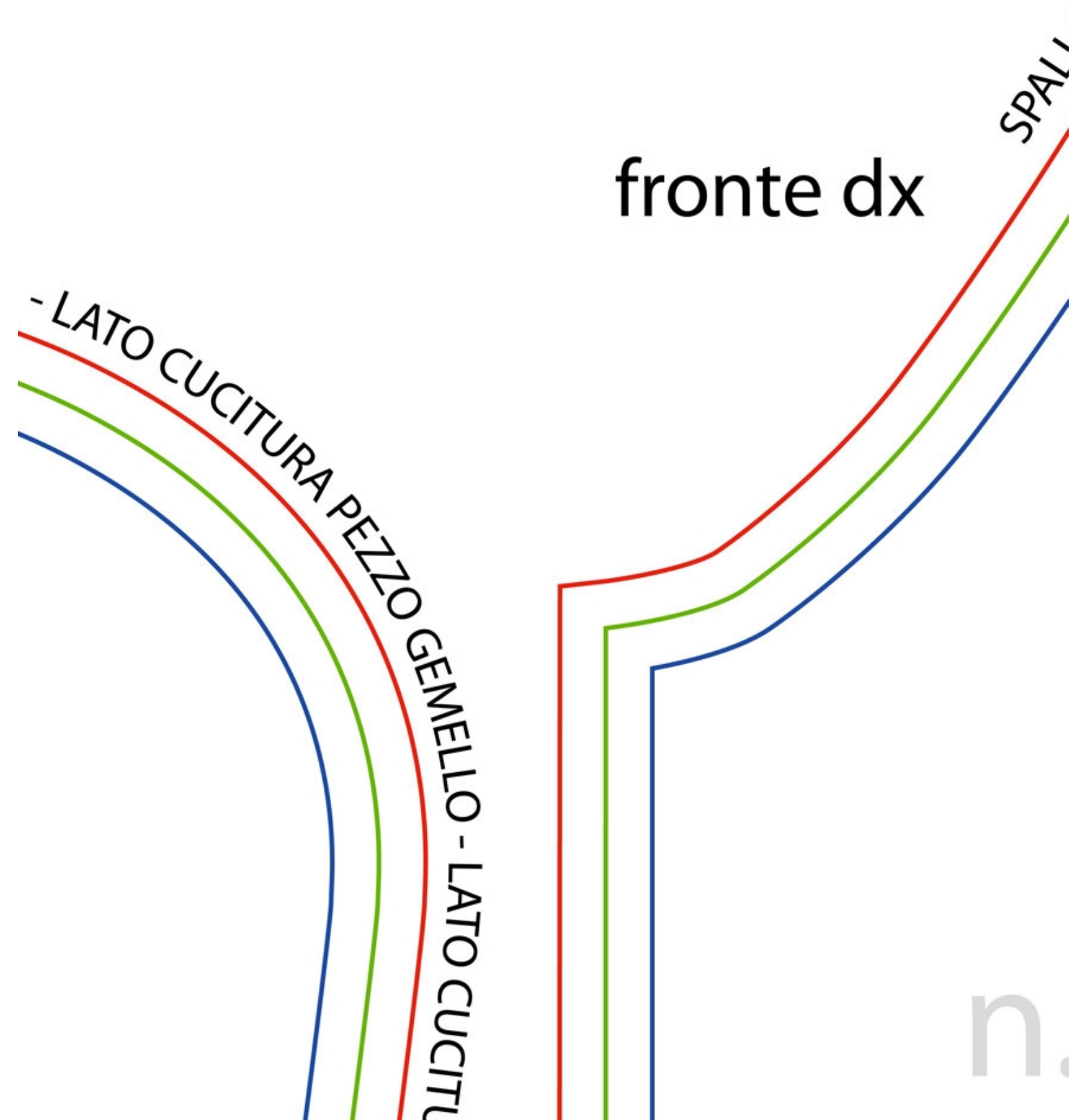


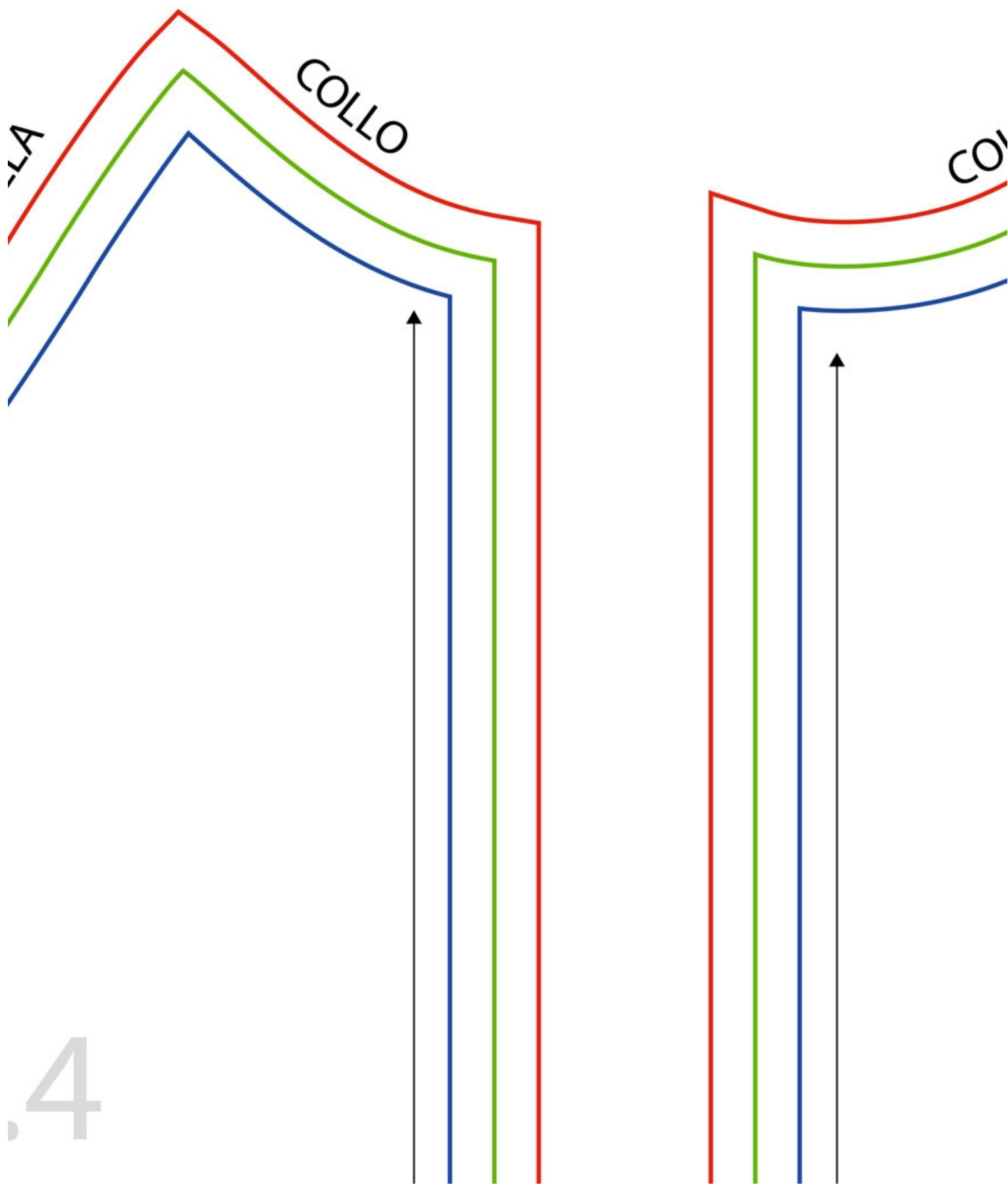
a di taglio taglia L

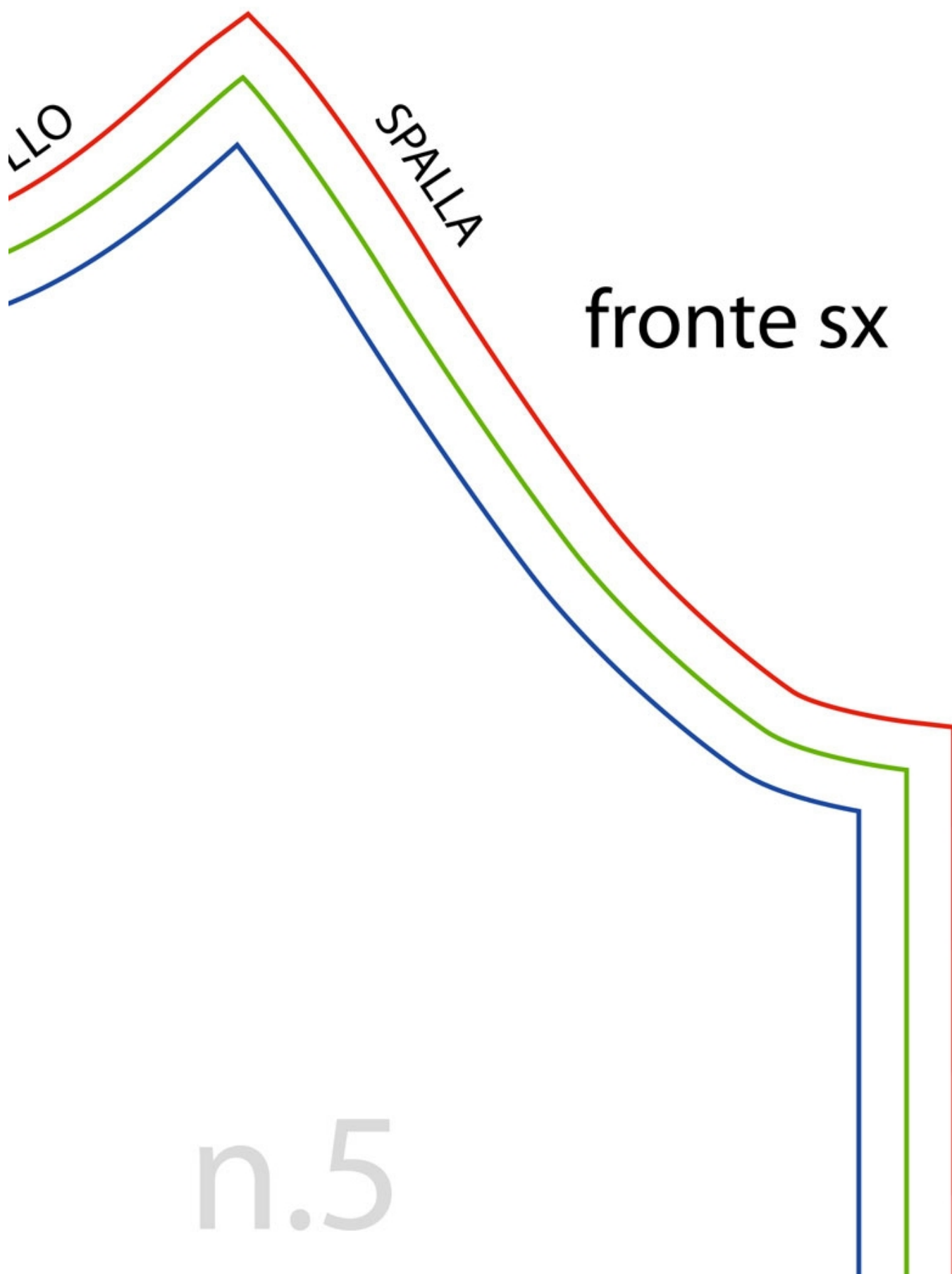
a di taglio taglia M

a di taglio taglia S

a di mezzo







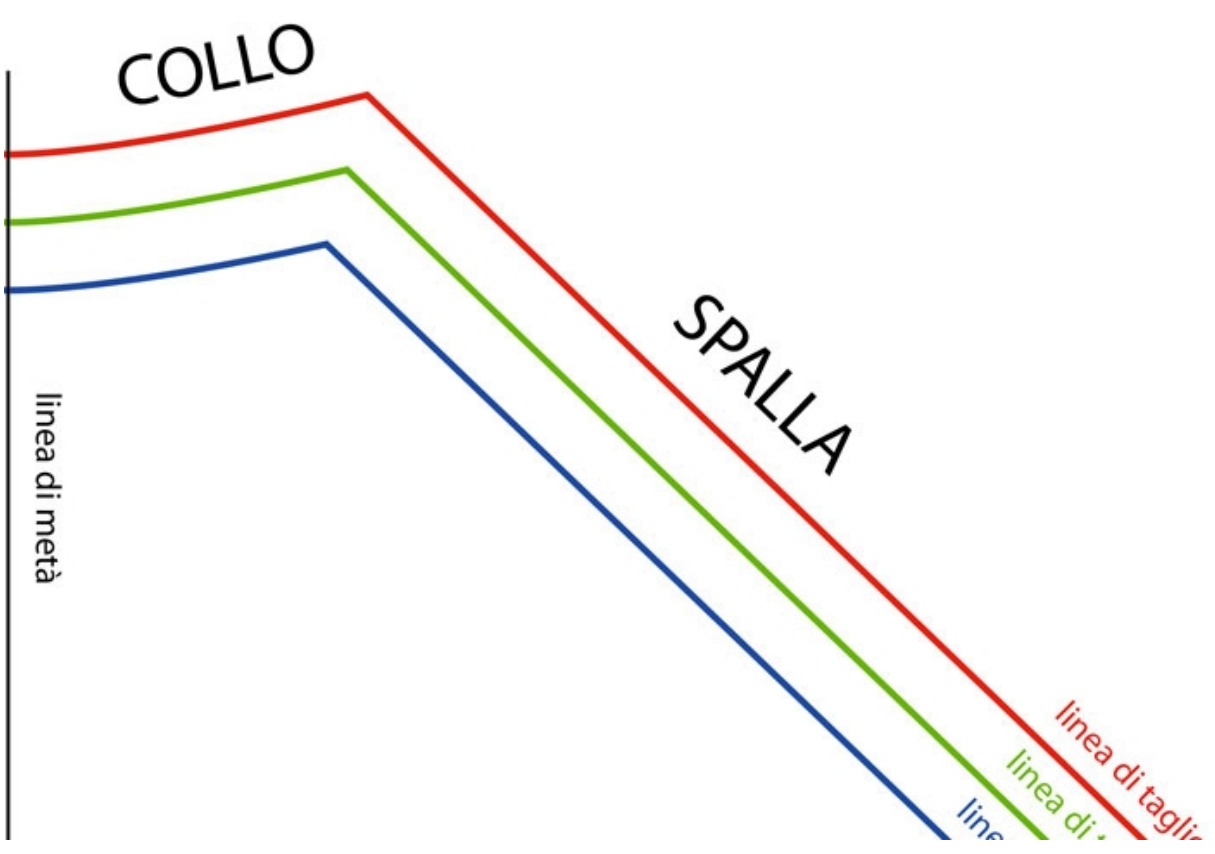
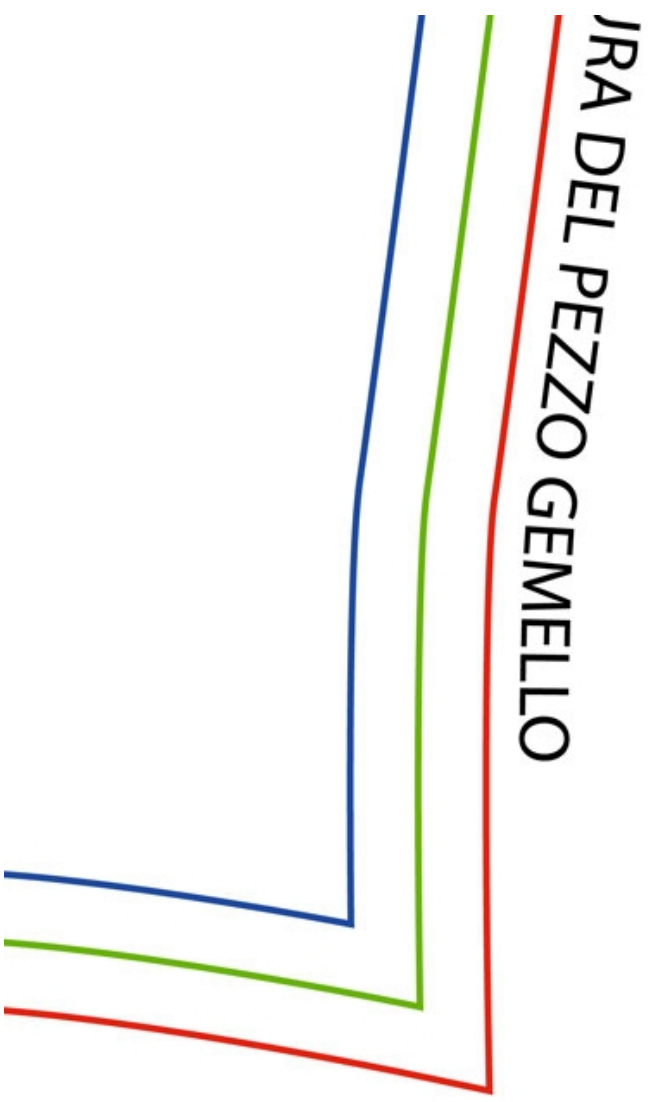
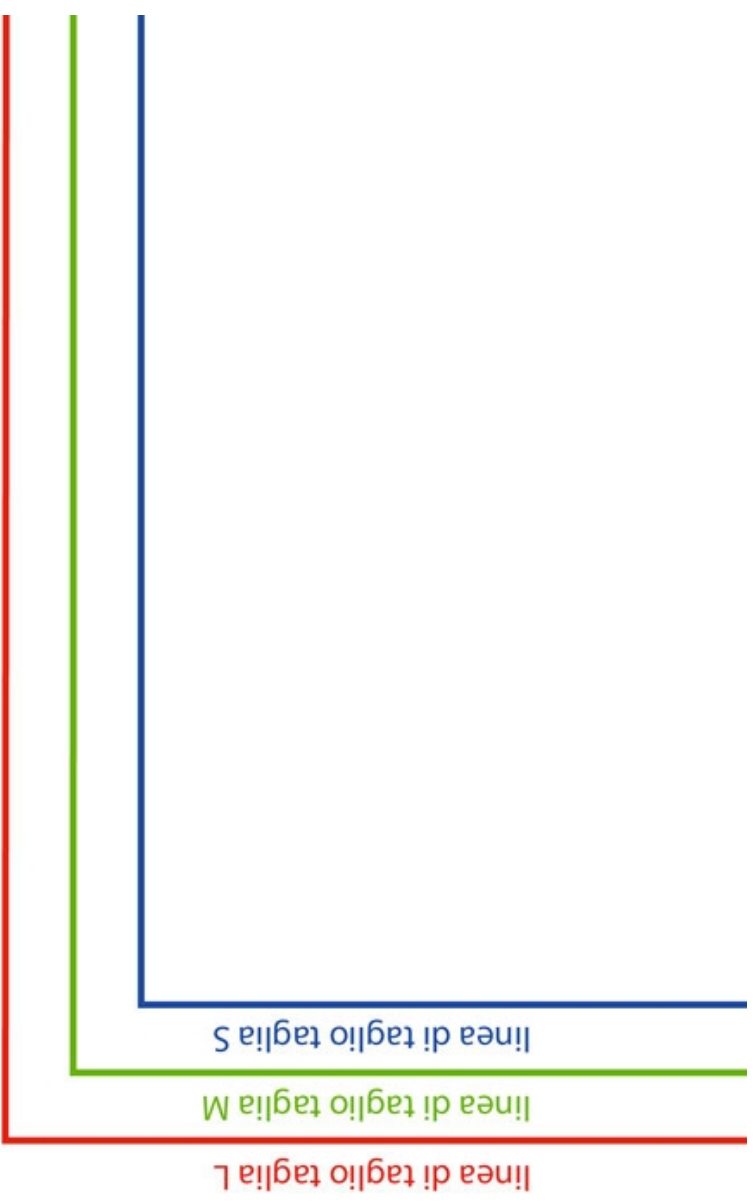
linea di taglio taglia L

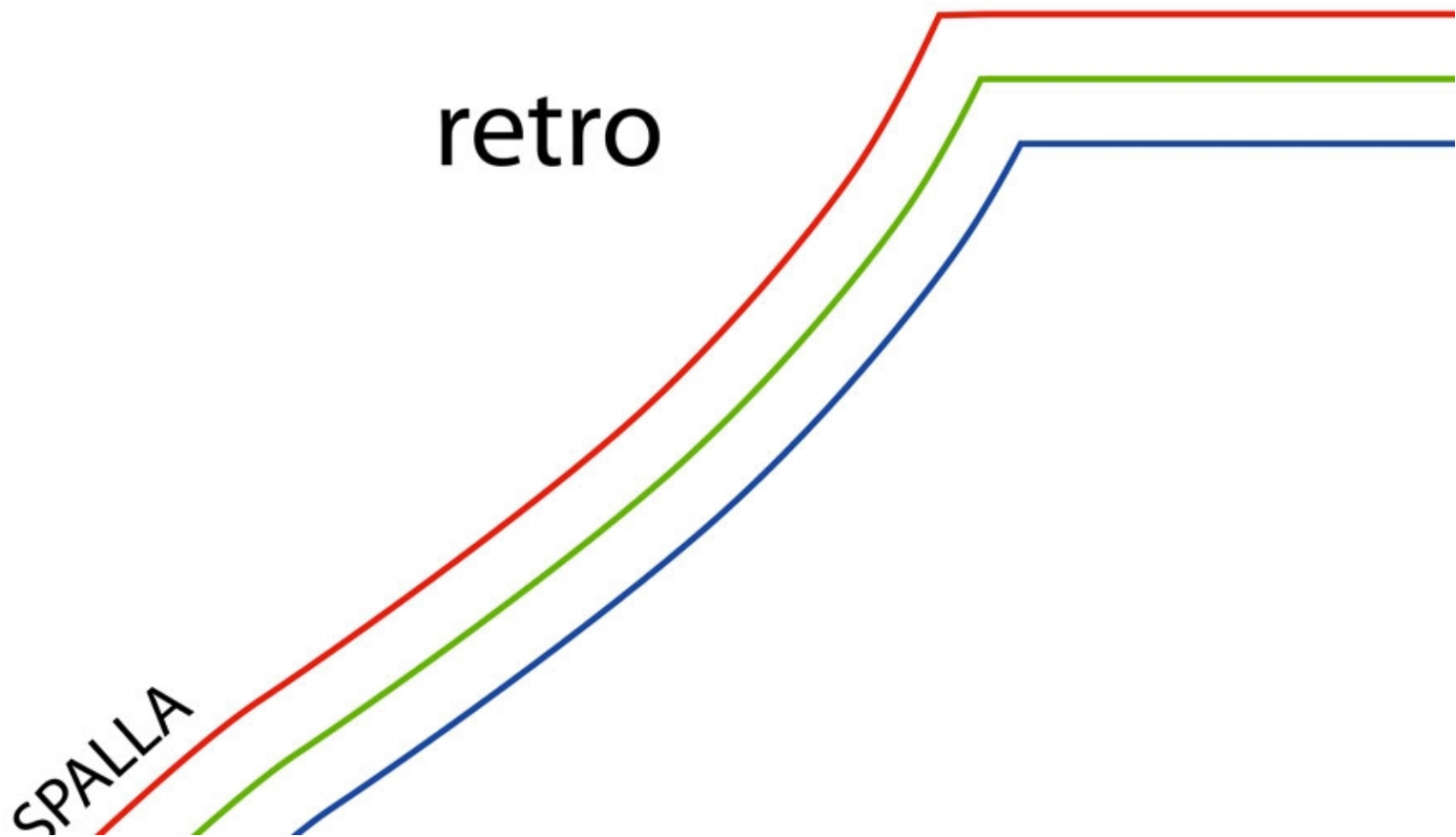
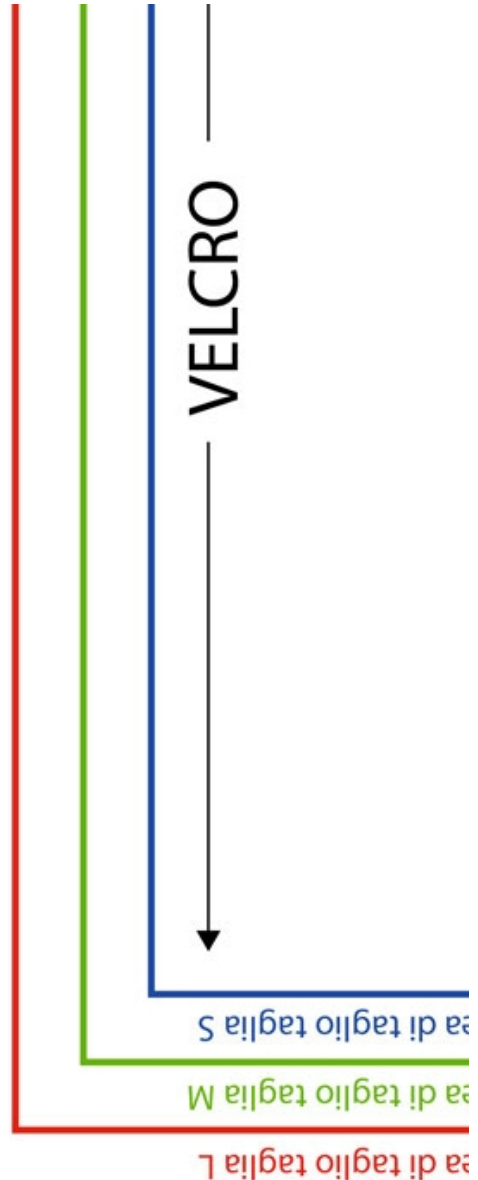
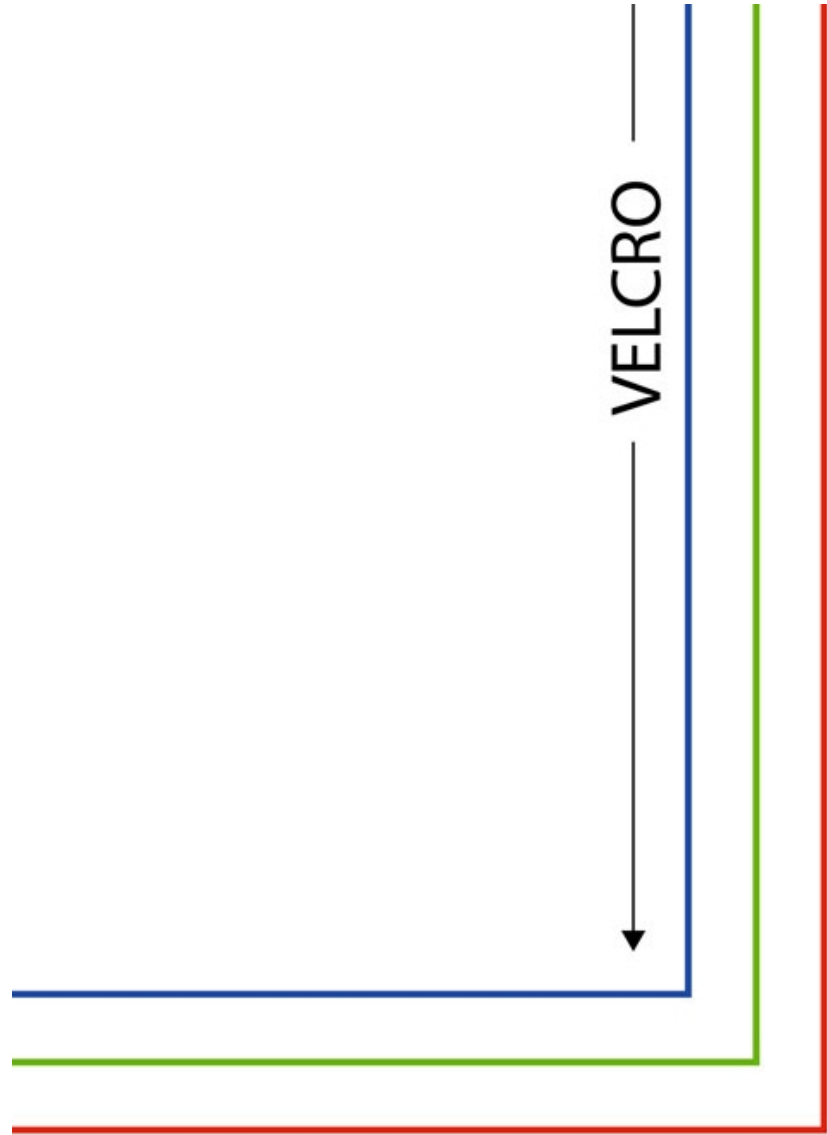
linea di taglio taglia M

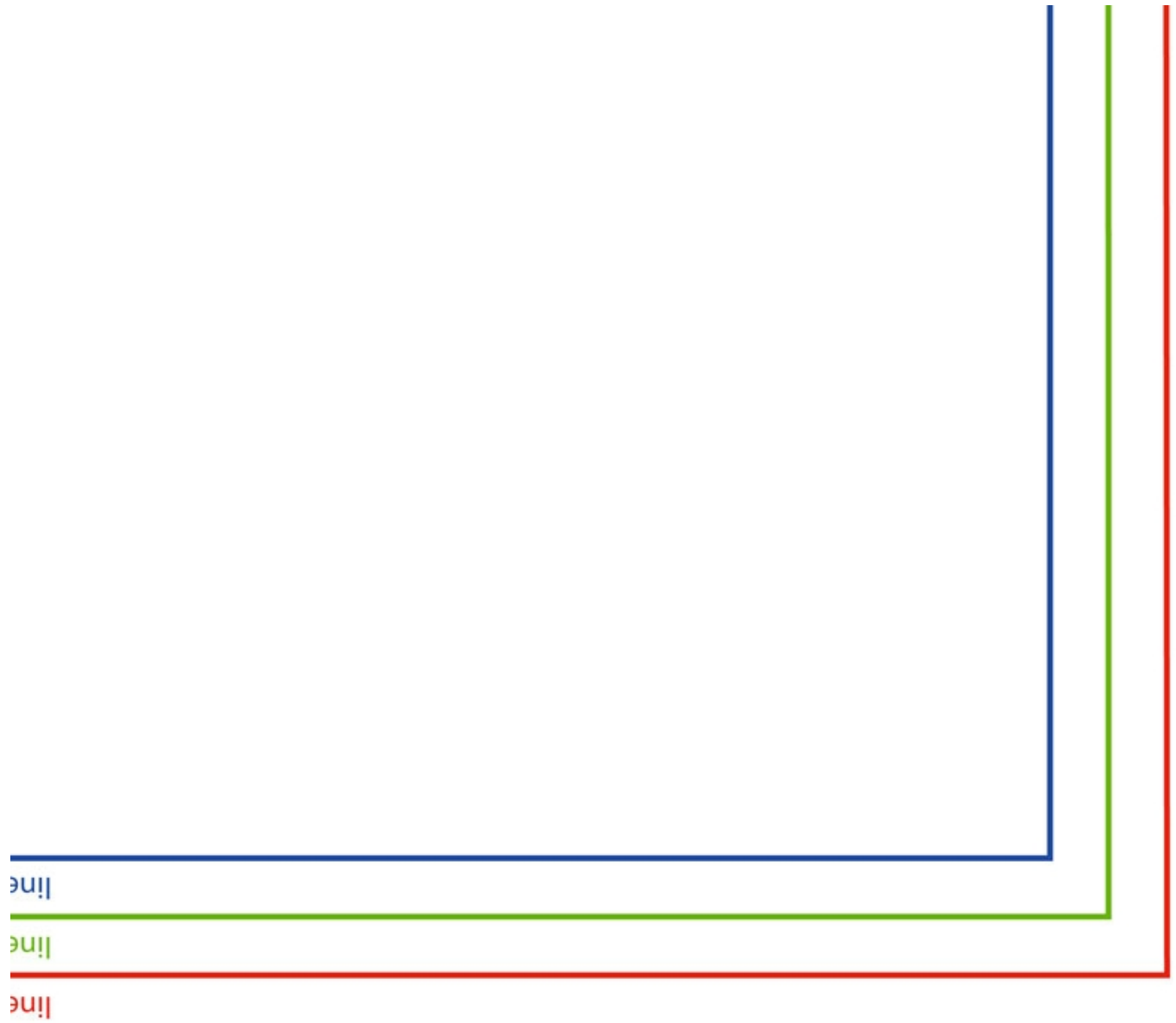
linea di taglio taglia S

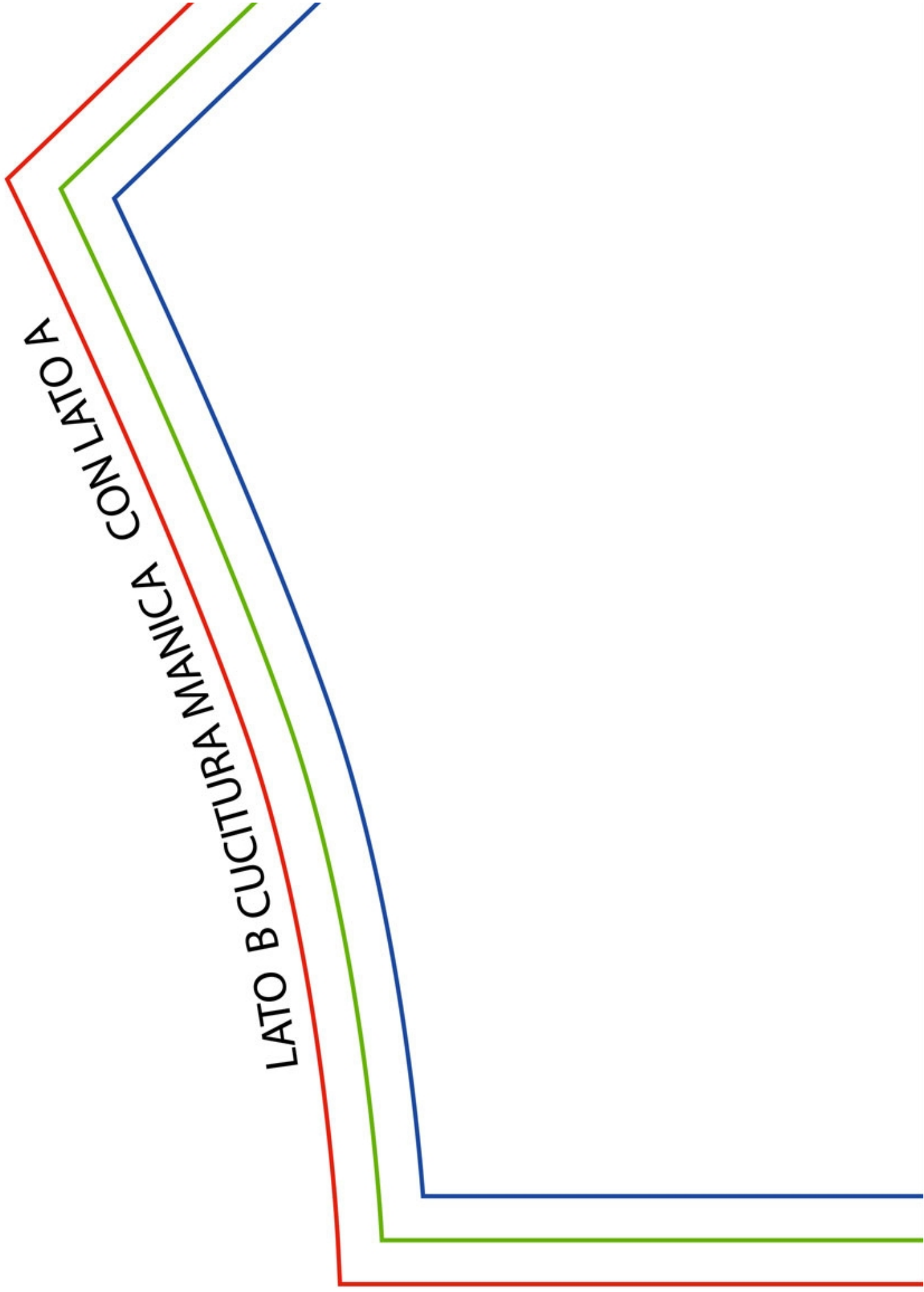
SPALLA - COLLO

manica 2x

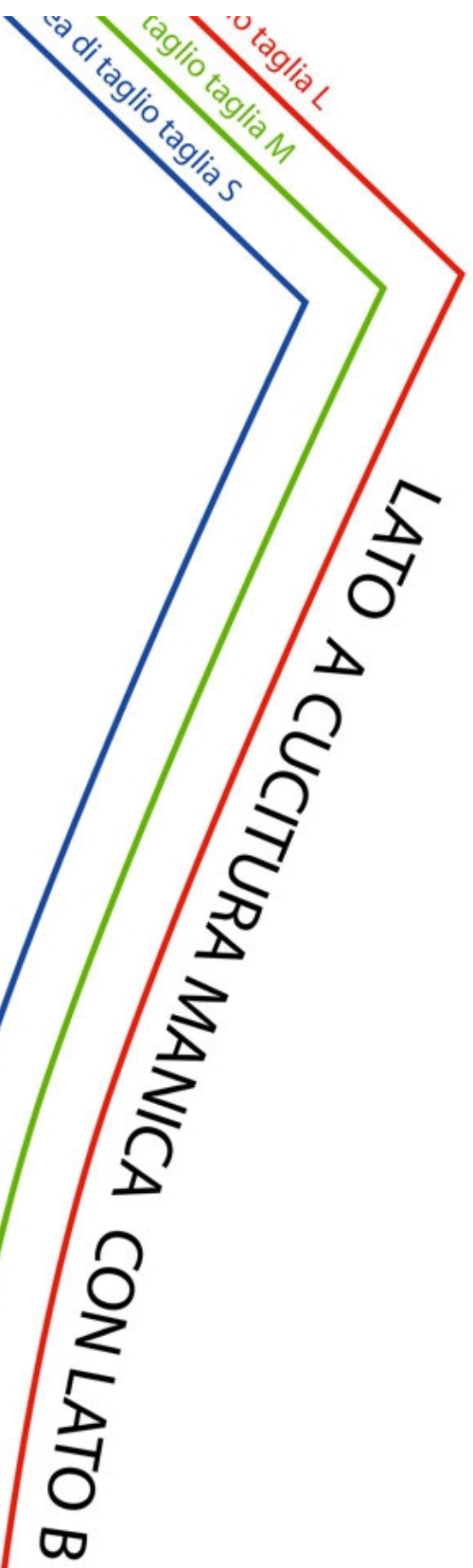








LATO B CUCITURA MANICA
CON LATO A



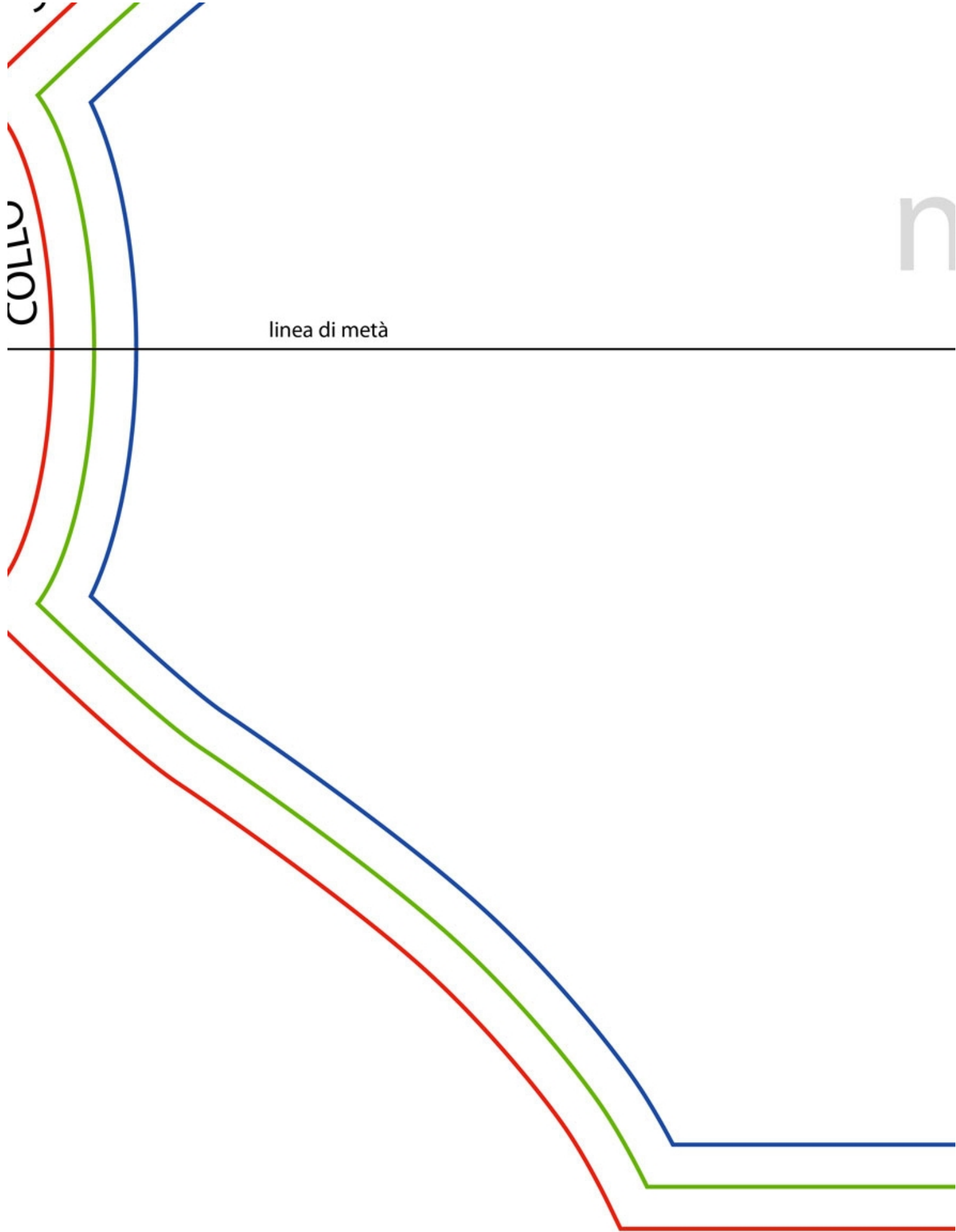
n.2

linea di metà

n

linea di metà

COLLO



1.3

linea di metà

